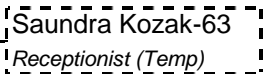
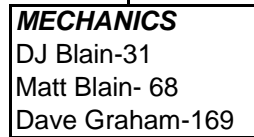
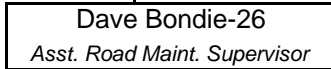
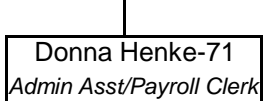
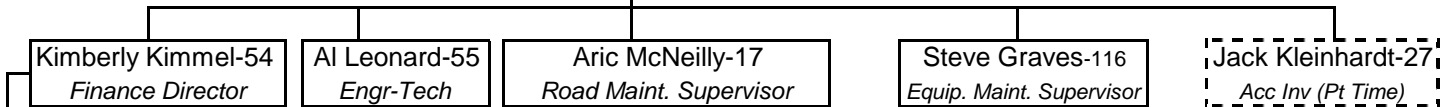
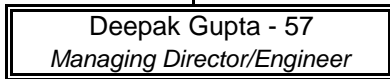


ORGANIZATIONAL CHART
Clare County Road Commission
 2018



TRUCKS	EE #
Josh Burger	142
Shawn Burger	62
Jon Cooper	33
Brad Darnell	65
Larry Edwards	36
Mike Fillhard	22
Andy Krawczynski-MDOT	24
Rick Marlow	138
Henry O'Hare	3
Lloyd Pifer	160
Scott Schutz	118
Brian Standen	25
Alfred Townsend	16
Bruce Wentworth-MDOT	158

EE #

SIGNS	EE #
John Koch	59

BOOM MOWER	EE #
Randy Bonham	11

LABORER	EE #
Jason Motney	148

TRUCK TRACTOR	EE #
Ken Pitchford	7

GRADERS	EE #
Brian Coon	128
Ed Jacobs	64
Mark Loomis	6
Jeff Stager	166

LOADER	EE #
Bob Fisch	147
Greg Hilyard	10

EXCAVATOR	EE #
Nate Hulliberger	15

Summary of Personnel	
Commissioners	3
Regular Employees	35
Part-Time/Temp Employees	3
Seasonal	0
Total Personnel	41

Breakdown by Class, Regular Employees	
Laborers	1
Truck Drivers	15
Operators	8
Sign Shop	1
Mechanics	3
sub-total, union	28

Commissioners	3
Admin & Supervision (Road, Shop)	7
Part-time/Temp	3
sub-total, non-union	13
Total Personnel	41

Admin Wage Range:			
-Salary Wage Range:	\$39,520	\$84,074	
(Hourly Conversion)	\$19.00	\$40.42	

Operation/Road Wage Range: *			
-Hourly Wage Range:	\$17.90	\$20.75	

*Job classification and wage rates: ranges based on most recent contract/collective bargaining agreement